

SUPERIOR SWR DRAINAGE SYSTEM FOR LEAK PROOF JOINTS

AREA OF APPLICATIONS

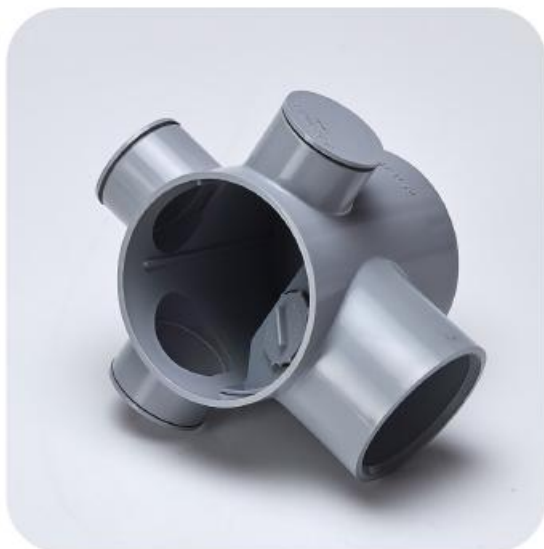
recommended for use in ventilation and rain water applications while Type B pipes are recommended for soil and discharge applications.

FEATURES & BENEFITS

- No Threading, No Solvent Cement
- Saves Labour And Time
- 100% Leak-Proof
- Dimensional Accuracy
- High Flow Rates, No Choking
- UV Protected

AVAILABLE SIZE

7.5cm, 9.0cm, 11.0cm, 16.0cm, 20.0cm, 25.0cm & 31.5cm



PIPES ARE SUBJECT TO TESTS LIKE:

- Tensile Strength
- Reversion
- Vicat Softening Temp. Test
- Water Tightness Of Joint
- Impact Strength
- Stress Relief Test
- Exposure To Sunlight

FIELDS OF APPLICATIONS

Drain & sewer systems in residences, commercial complexes, resorts, hospitals, academic institutes, industries etc.

DRAINMASTER - SEL FIT PIPE & FITTINGS

PIPES TYPE - A

HSN CODE: 3917

Size (cm)	Length & Socket Type	Product Code	Std. Pkg. (Nos.)
7.5	3 MTR S/S	M411110307	As Req.
7.5	6 MTR S/S	M411110607	As Req.
7.5	3 MTR D/S	M421110307	As Req.
7.5	6 MTR D/S	M421110607	As Req.
7.5	2 FT D/S	M421112207	As Req.
7.5	3 FT D/S	M421113307	As Req.
7.5	4 FT D/S	M421114407	As Req.
7.5	6 FT D/S	M421116607	As Req.
7.5	12 FT D/S	M421111207*	As Req.
7.5	2 FT S/S	M411112207	As Req.
7.5	3 FT S/S	M411113307	As Req.
7.5	4 FT S/S	M411114407	As Req.
7.5	6 FT S/S	M411116607	As Req.
7.5	12 FT S/S	M411111207*	As Req.

PIPES TYPE - A

HSN CODE: 3917

Size (cm)	Length & Socket Type	Product Code	Std. Pkg. (Nos.)
11.0	3 MTR S/S	M411110309	As Req.
11.0	6 MTR S/S	M411110609	As Req.
11.0	3 MTR D/S	M421110309	As Req.
11.0	6 MTR D/S	M421110609	As Req.
11.0	2 FT D/S	M421112209	As Req.
11.0	3 FT D/S	M421113309	As Req.
11.0	4 FT D/S	M421114409	As Req.
11.0	6 FT D/S	M421116609	As Req.
11.0	12 FT D/S	M421111209*	As Req.
11.0	2 FT S/S	M411112209	As Req.
11.0	3 FT S/S	M411113309	As Req.
11.0	4 FT S/S	M411114409	As Req.
11.0	6 FT S/S	M411116609	As Req.
11.0	12 FT S/S	M411111209*	As Req.

PIPES TYPE - A

HSN CODE: 3917

Size (cm)	Length & Socket Type	Product Code	Std. Pkg. (Nos.)
9.0	3 MTR S/S	M411110308	As Req.
9.0	6 MTR S/S	M411110608	As Req.
9.0	3 MTR D/S	M421110308	As Req.
9.0	6 MTR D/S	M421110608	As Req.
9.0	2 FT D/S	M421112208	As Req.
9.0	3 FT D/S	M421113308	As Req.
9.0	4 FT D/S	M421114408	As Req.
9.0	6 FT D/S	M421116608	As Req.
9.0	2 FT S/S	M411112208	As Req.
9.0	3 FT S/S	M411113308	As Req.
9.0	4 FT S/S	M411114408	As Req.
9.0	6 FT S/S	M411116608	As Req.

PIPES TYPE - A

HSN CODE: 3917

Size (cm)	Length & Socket Type	Product Code	Std. Pkg. (Nos.)
16.0	3 MTR S/S	M411110312	As Req.
16.0	6 MTR S/S	M411110612	As Req.
16.0	3 MTR D/S	M421110312	As Req.
16.0	6 MTR D/S	M421110612	As Req.
16.0	2 FT D/S	M421112212	As Req.
16.0	3 FT D/S	M421113312	As Req.
16.0	4 FT D/S	M421114412	As Req.
16.0	6 FT D/S	M421116612	As Req.
16.0	2 FT S/S	M411112212	As Req.
16.0	3 FT S/S	M411113312	As Req.
16.0	4 FT S/S	M411114412	As Req.
16.0	6 FT S/S	M411116612	As Req.

PIPES TYPE - B

HSN CODE: 3917

Size (cm)	Length & Socket Type	Product Code	Std. Pkg. (Nos.)
7.5	3 MTR S/S	M411120307	As Req.
7.5	6 MTR S/S	M411120607	As Req.
7.5	3 MTR D/S	M421120307	As Req.
7.5	6 MTR D/S	M421120607	As Req.
7.5	2 FT D/S	M421122207	As Req.
7.5	3 FT D/S	M421123307	As Req.
7.5	4 FT D/S	M421124407	As Req.
7.5	6 FT D/S	M421126607	As Req.
7.5	12 FT D/S	M421121207*	As Req.
7.5	2 FT S/S	M411122207	As Req.
7.5	3 FT S/S	M411123307	As Req.
7.5	4 FT S/S	M411124407	As Req.
7.5	6 FT S/S	M411126607	As Req.
7.5	12 FT S/S	M411121207*	As Req.

PIPES TYPE - B

HSN CODE: 3917

Size (cm)	Length & Socket Type	Product Code	Std. Pkg. (Nos.)
11.0	3 MTR S/S	M411120309	As Req.
11.0	6 MTR S/S	M411120609	As Req.
11.0	3 MTR D/S	M421120309	As Req.
11.0	6 MTR D/S	M421120609	As Req.
11.0	2 FT D/S	M421122209	As Req.
11.0	3 FT D/S	M421123309	As Req.
11.0	4 FT D/S	M421124409	As Req.
11.0	6 FT D/S	M421126609	As Req.
11.0	12 FT D/S	M421121209*	As Req.
11.0	2 FT S/S	M411122209	As Req.
11.0	3 FT S/S	M411123309	As Req.
11.0	4 FT S/S	M411124409	As Req.
11.0	6 FT S/S	M411126609	As Req.
11.0	12 FT S/S	M411121209*	As Req.

PIPES TYPE - B

HSN CODE: 3917

Size (cm)	Length & Socket Type	Product Code	Std. Pkg. (Nos.)
9.0	3 MTR S/S	M411120308	As Req.
9.0	6 MTR S/S	M411120608	As Req.
9.0	3 MTR D/S	M421120308	As Req.
9.0	6 MTR D/S	M421120608	As Req.
9.0	2 FT D/S	M421122208	As Req.
9.0	3 FT D/S	M421123308	As Req.
9.0	4 FT D/S	M421124408	As Req.
9.0	6 FT D/S	M421126608	As Req.
9.0	2 FT S/S	M411122208	As Req.
9.0	3 FT S/S	M411123308	As Req.
9.0	4 FT S/S	M411124408	As Req.
9.0	6 FT S/S	M411126608	As Req.

PIPES TYPE - B

HSN CODE: 3917

Size (cm)	Length & Socket Type	Product Code	Std. Pkg. (Nos.)
16.0	3 MTR S/S	M411120312	As Req.
16.0	6 MTR S/S	M411120612	As Req.
16.0	3 MTR D/S	M421120312	As Req.
16.0	6 MTR D/S	M421120612	As Req.
16.0	2 FT D/S	M421122212	As Req.
16.0	3 FT D/S	M421123312	As Req.
16.0	4 FT D/S	M421124412	As Req.
16.0	6 FT D/S	M421126612	As Req.
16.0	2 FT S/S	M411122212	As Req.
16.0	3 FT S/S	M411123312	As Req.
16.0	4 FT S/S	M411124412	As Req.
16.0	6 FT S/S	M411126612	As Req.

DRAINMASTER - SEL FIT PIPE & FITTINGS

PIPES TYPE - B

HSN CODE: 3917

Size (cm)	Length & Socket Type	Product Code	Std. Pkg. (Nos.)
20.0	3 MTR S/S	M411120314*	As Req.
20.0	6 MTR S/S	M411120614*	As Req.
20.0	3 MTR D/S	M421120314*	As Req.
20.0	6 MTR D/S	M421120614*	As Req.

PIPES TYPE - B

HSN CODE: 3917

Size (cm)	Length & Socket Type	Product Code	Std. Pkg. (Nos.)
31.5	3 MTR S/S	M411120318*	As Req.
31.5	6 MTR S/S	M411120618*	As Req.
31.5	3 MTR D/S	M421120318*	As Req.
31.5	6 MTR D/S	M421120618*	As Req.

PIPES TYPE - B

HSN CODE: 3917

Size (cm)	Length & Socket Type	Product Code	Std. Pkg. (Nos.)
25.0	3 MTR S/S	M411120316*	As Req.
25.0	6 MTR S/S	M411120616*	As Req.
25.0	3 MTR D/S	M421120316*	As Req.
25.0	6 MTR D/S	M421120616*	As Req.



Size (cm)	Product Code	Std. Pkg. (Nos.)
7.5	M252001107	30
9.0	M252001108	18
11.0	M252001109	27
16.0	M252001112	10



Size (cm)	Product Code	Std. Pkg. (Nos.)
7.5	M252001407	24
11.0	M252001409	16



Size (cm)	Product Code	Std. Pkg. (Nos.)
7.5	M252001207	38
9.0	M252001208	38
11.0	M252001209	24
16.0	M252001212	08



Size (cm)	Product Code	Std. Pkg. (Nos.)
7.5	M252001507	24
11.0	M252001509	16



Size (cm)	Product Code	Std. Pkg. (Nos.)
7.5	M252001307	20
9.0	M252001308	32
11.0	M252001309	18
16.0	M252001312	07



Size (cm)	Product Code	Std. Pkg. (Nos.)
7.5	M252001607	43
9.0	M252001608	27
11.0	M252001609	42
16.0	M252001612	14

DRAINMASTER - SEL FIT PIPE & FITTINGS



Size (cm)	Product Code	Std. Pkg. (Nos.)
7.5	M252001707	43
11.0	M252001709	42



Size (cm)	Product Code	Std. Pkg. (Nos.)
7.5	M252000107	41
9.0	M252000108	26
11.0	M252000109	15
16.0	M252000112	04



Size (cm)	Product Code	Std. Pkg. (Nos.)
7.5	M252000707	32
11.0	M252000709	09



Size (cm)	Product Code	Std. Pkg. (Nos.)
7.5	M252000207	32
9.0	M252000208	20
11.0	M252000209	12
16.0	M252000212	04



Size (cm)	Product Code	Std. Pkg. (Nos.)
7.5	M252000807	24
11.0	M252000809	08



Size (cm)	Product Code	Std. Pkg. (Nos.)
9.0 x 7.5	M252000330	28
11.0 x 7.5	M252000329	19
16.0 x 7.5	M252000335	07
16.0 x 11.0	M252000331	06



Size (cm)	Product Code	Std. Pkg. (Nos.)
7.5	M006500075	1400
9.0	M006500090	960
11.0	M006500110	600
16.0	M006500160	180
20.0	M006500200	75



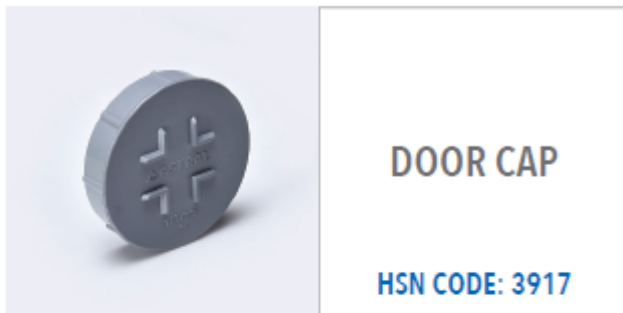
Size (cm)	Product Code	Std. Pkg. (Nos.)
11.0	F172006009	06
11.0	F172006009B	06



Size (cm)	Product Code	Std. Pkg. (Nos.)
7.5	M212002907	92
11.0	M212002909	36



Size (cm)	Product Code	Std. Pkg. (Nos.)
11.0 x 7.5	F182005729	As Req.
12.5 x 11.0	M212003834	40



Size (cm)	Product Code	Std. Pkg. (Nos.)
5.0	M212004005	300
6.3	M212004006	300
7.5	M212004007	300
9.0	M212004008	200
11.0	M212004009	200

DRAINMASTER - SEL FIT

PIPE & FITTINGS



Size (cm)	Product Code	Std. Pkg. (Nos.)
11.0 x 6.3	M212003032	38
11.0 x 7.5	M212003029	38
11.0 x 9.0	M212003043	38
16.0 x 11.0	M212003031	09



Size (cm)	Product Code	Std. Pkg. (Nos.)
16.0 x 7.5	M212007535	09
16.0 x 11.0	M212007531	09



Size (cm)	Product Code	Std. Pkg. (Nos.)
12.5 x 11.0	M1420012834	24



Size (cm)	Product Code	Std. Pkg. (Nos.)
12.5 x 11.0	M1420012934	18



Size (cm)	Product Code	Std. Pkg. (Nos.)
12.5 x 11.0	M1420013034	18



Size (cm)	Product Code	Std. Pkg. (Nos.)
11.0 x 5.0/4.0	M212003344	28

WIDEST RANGE OF PRODUCTS

PLUMBING PIPES & FITTINGS

CPVC PRO

Pex-a PRO

Aquarius

SEWERAGE DRAINAGE PIPES & FITTINGS

Silencio

DrainMaster

Foamcore

DrainHulk

Underground

D-Rex

RexTP

AGRICULTURE PIPES & FITTINGS

Bore-Well

Case-Well

Aquasafe

AquaRex

Geo-Rex

SURFACE DRAINAGE SYSTEM

Hauraton

INDUSTRIAL PIPES & FITTINGS

Chem PRO

Aquarius Plus

FIRE SPRINKLERS PIPES & FITTINGS

Fire PRO

CABLE PROTECTION

Wire Guard

TeleRex

URBAN INFRASTRUCTURE

Plus+StiRex

Pre-StiRex

INSULATION TUBE

Insu PRO